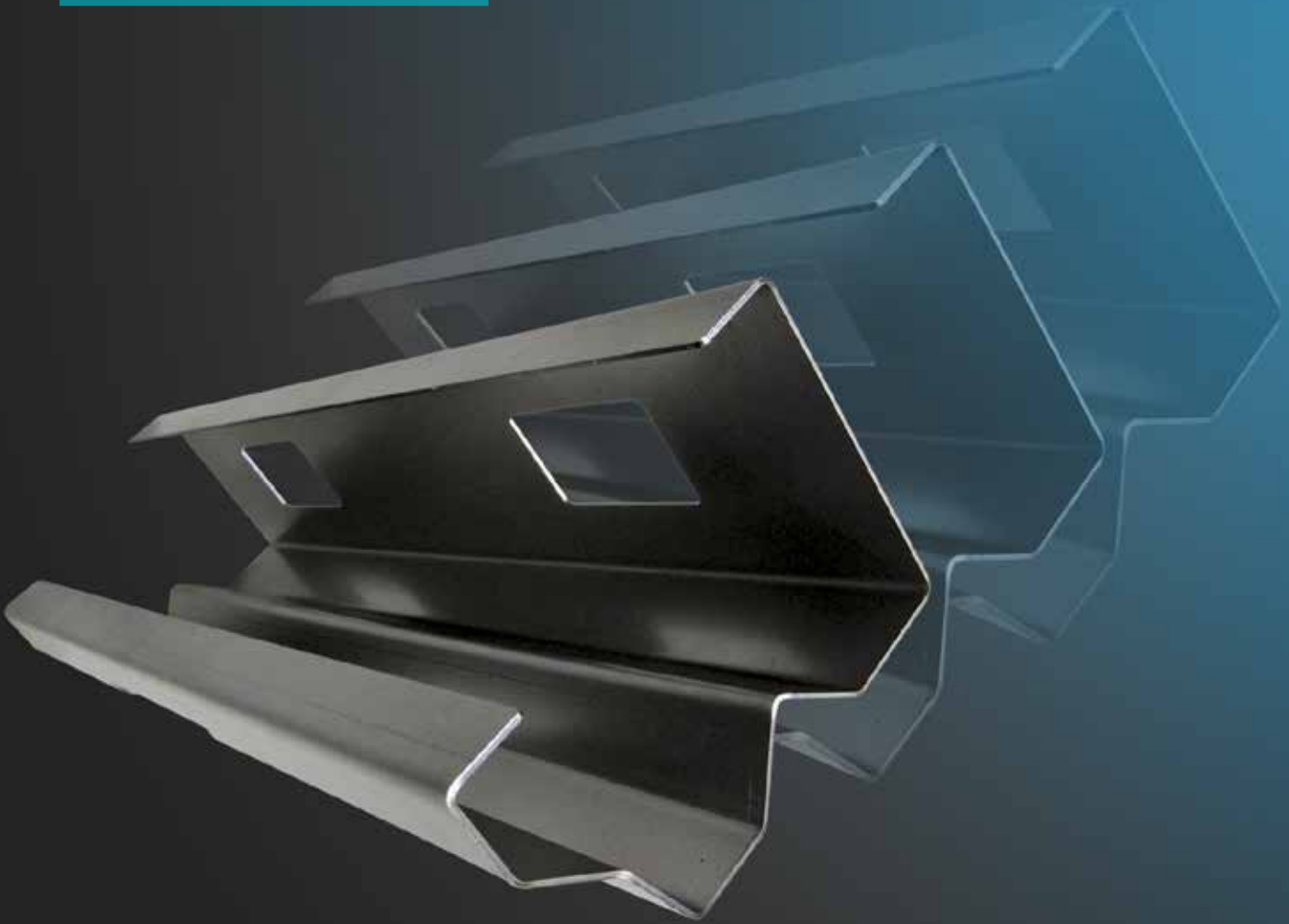
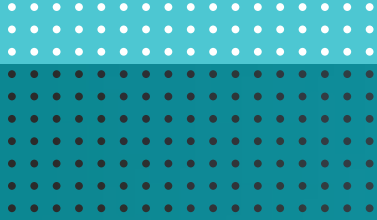


*Hydraulic press
brakes*

PPED SERIES

ACCURATE, ECONOMICAL BENDING



PPED SERIES

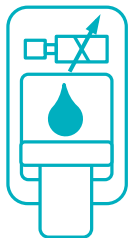
ACCURATE, ECONOMICAL BENDING

Practical and easy to use, PPED press brakes are ideal for a wide range of bending jobs. The rigid construction and servo-controlled hydraulic system offer accurate and consistent bending results.



INTUITIVE CONTROL

The graphical 15" Touch-B control is user-friendly and makes full use of the machine's bending capabilities.



SERVO-CONTROLLED HYDRAULIC SYSTEM

The hydraulic components are machined in-house to a high standard from a solid steel billet. The hardened steel pistons are precisely finished and micropolished for a lifetime of trouble-free service.





RIGID FRAME DESIGN

All PPED models are designed and built utilizing a welded one-piece frame machined without repositioning and stress relieved to guarantee machine precision.



CNC CROWNING

PPED-7 models with bending lengths of 10 feet (3 meters) and up are equipped with an in-house developed and machined, tailor-made V-axis crowning system.



BACKGAUGE

The newly designed backgauge is a robust construction featuring 2-axis (X, R) or 4-axis (X, R, Z1, Z2) configurations for greater flexibility and increased productivity.

PPED PART QUALITY



PROGRAMMABLE X,R OR X, R, Z1, Z2 BACKGAUGE

The PPED is offered in three models (PPED-4, PPED-6 and PPED-7) with either 2 or 4 standard backgauge axes. A multi-axis backgauge offers more flexibility and reduces machine setup time across simple to complex bending jobs.

TOUCH-B CONTROL

LVD's touch screen control is simple to operate with a graphical, icon-driven user interface. It provides synchronized control of the machine allowing positioning of all available axes. The operator can create 2D drawings and simulate in 3D on the 15" touch screen. Users can also work with standard and custom parametric programs to offer rapid programming. Common bending modes air bending, bottoming, and coining are supported by the system.

Touch-B works with the centralized database and is compatible with CADMAN-JOB and CADMAN-B.



CNC CROWNING

PPED-7 models with bending lengths of 10 feet (3 meters) and up are equipped as standard with an in-house developed and machined, tailor-made crowning system. Sheet thickness, bend length, die opening and tensile strength data are entered into the Touch-B control to determine the amount of crowning required to compensate for bed and ram deflection.



LINEAR ENCODERS

High-precision linear encoders provide superior positioning accuracy and repeatability.



LAZERSAFE SYSTEM*

An intelligent system that uses laser scanning technology to provide point of operation monitoring.

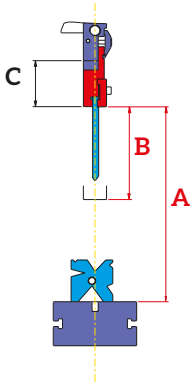
*Not included in base configuration.

CAPACITIES FROM 50 TO 320 TONS

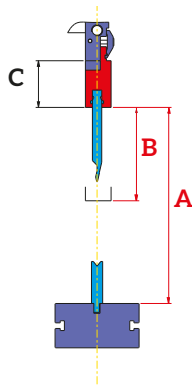


TOOLING STYLES

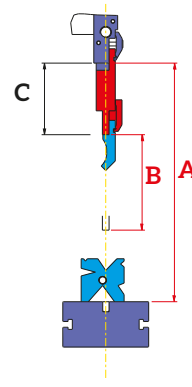
U.S. STYLE



W STYLE



UNIVERSAL STYLE



U.S. STYLE	A	B	C
PPED 50-80	15.7"	7.9"	3.9"
PPED 135-165-200	15.7"	7.9"	3.9"
PPED 260-320	22.4"	11.8"	3.9"

W STYLE	A	B	C
PPED 50-80	15.7"	7.9"	3.9"
PPED 135-165-200	15.7"	7.9"	3.9"
PPED 260-320	22.4"	11.8"	3.9"

UNIVERSAL STYLE	A	B	C
PPED 50-80	19.7"	7.9"	7.1"
PPED 135-165-200	19.7"	7.9"	7.1"

Wila hydraulic clamping optional from factory.



SPECIFICATIONS

PPED SERIES

TYPE	50/20	80/25	135/30	165/30	165/40
Pressing force (US tons)	55	90	150	180	180
Working length	78"	98"	120"	120"	157"
Distance between uprights	61"	80"	100"	100"	124"
Stroke	7.8"	7.8"	7.8"	7.8"	7.8"
Distance table / ram	19.6"	19.6"	19.6"	19.6"	19.6"
Gap	7.8"	7.8"	9.8"	9.8"	9.8"
Approach speed (in/min)	377	307	212	259	259
Working speed (in/min)	21	24	24	24	24
Return speed (in/min)	212	236	224	236	236
Motor (kW)	4	7.5	15	18	18
Oil (gal)	32	40	66	79	79

TYPE	200/30	200/40	260/30	260/40	320/30	320/40
Pressing force (US tons)	220	220	285	285	350	350
Working length	120"	157"	120"	157"	120"	157"
Distance between uprights	100"	124"	100"	124"	100"	124"
Stroke	7.8"	7.8"	11.8"	11.8"	11.8"	11.8"
Distance table / ram	19.6"	19.6"	26.3"	26.3"	26.3"	26.3"
Gap	11.8"	11.8"	11.8"	11.8"	11.8"	11.8"
Approach speed (in/min)	236	236	212	212	177	177
Working speed (in/min)	21	21	24	24	18	18
Return speed (in/min)	212	212	212	212	188	177
Motor (kW)	18	18	22	22	22	22
Oil (gal)	92	92	106	106	106	106

Specifications subject to change without prior notice.

SOFTWARE INTEGRATION

LVD's database-driven **CADMAN® Suite software** integrates sheet metalworking processes, production control, communication and management. It provides users real-time data to make informed choices, enabling optimized programming and maximized throughput in the workshop.

CADMAN-JOB

CADMAN-JOB connects the front office intakes and processing of orders with the shop floor operations. The software creates or imports production orders from an ERP system allowing users to generate production jobs for bending.



CADMAN-B

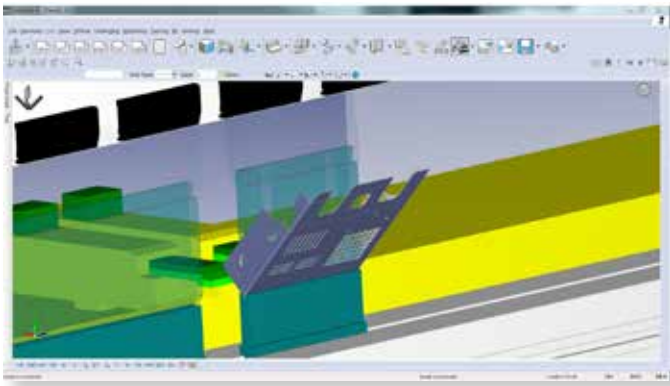
After importing a 3D CAD part, CADMAN-B automatically identifies part design requirements for the application. The module can visualize the complete bend process with start to finish collision detection, gauge positions and tool setups.

TOUCH-B CONTROL

The speed and simplicity of touch screen technology is combined with the power of a CNC control. Touch-B works with the centralized CADMAN database, is compatible with CADMAN-JOB and CADMAN-B and has access to LVD's customer support helpdesk.

TOUCH-i4

Touch-i4 is an industrial strength Windows®-based tablet that provides an overview of the entire fabrication workshop. It collects real-time information from your LVD machine(s) powered by the centralized CADMAN database.



LVD North America
12975 Clarence Center Rd.
AKRON NY 14001, UNITED STATES
Tel. +1 716 542 4511 - marketing.us@lvdgroup.com - www.lvdgroup.com

LVD North America is the trade name of the Sales & Service division of Stripit, Inc.

