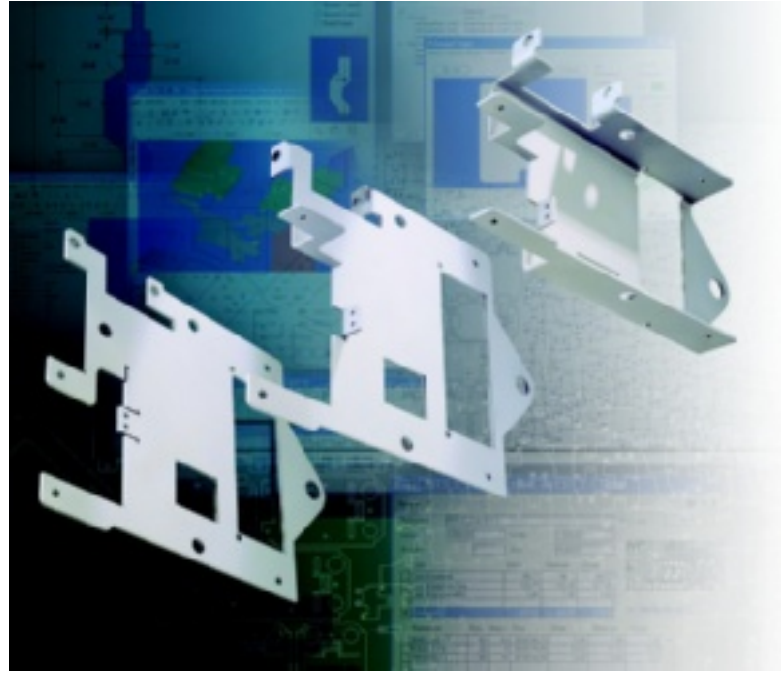




SOFTWARE

CADMAN[®]



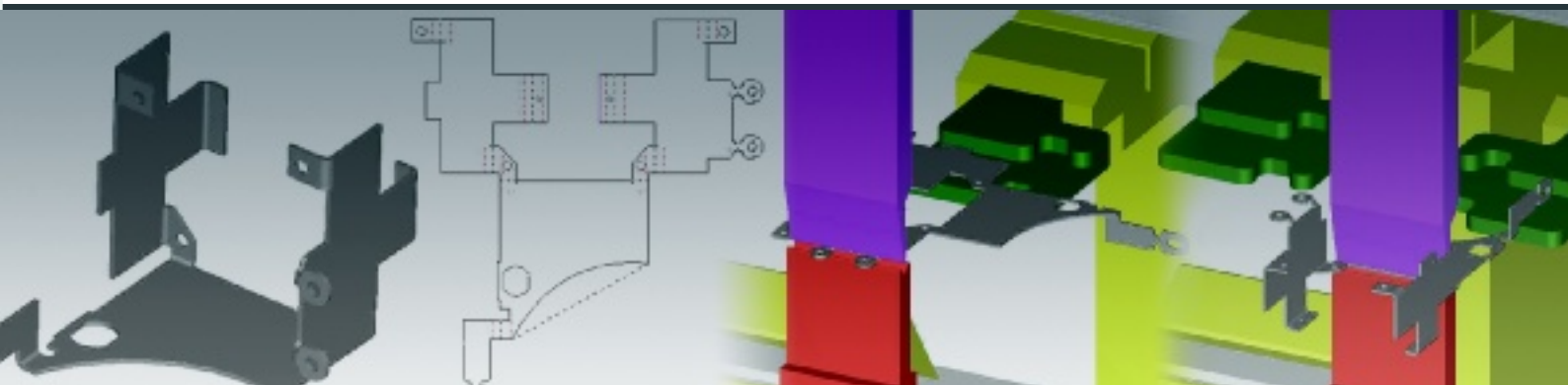
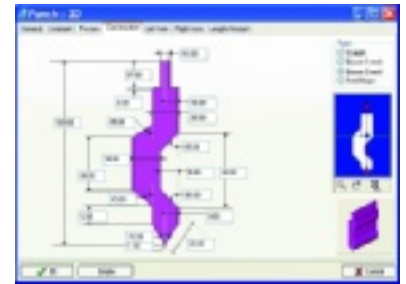
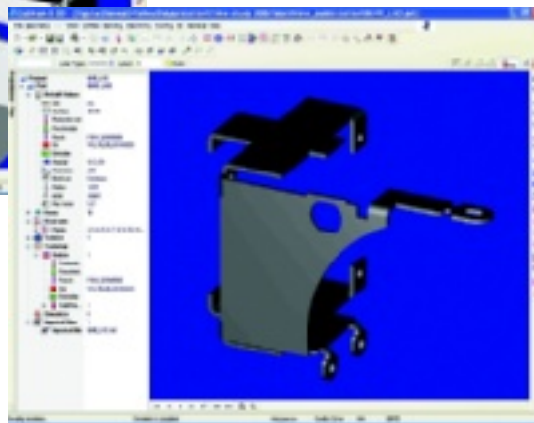
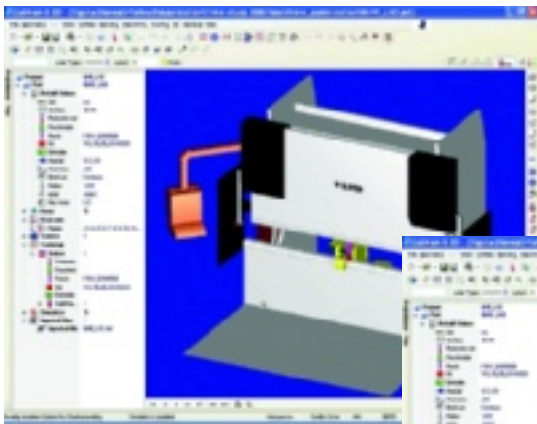
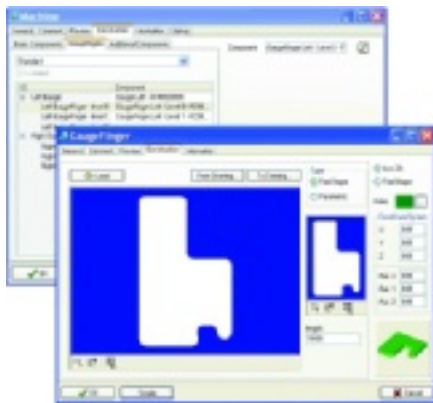
CADMAN - B 3D

Intelligent Bending Software

CADMAN-B 3D simplifies the programming of formed parts and automatically determines the correct unfolding of the part, the bend sequence, gauging positions and tool selection, all optimized for minimum tool stations and part turns. By utilizing an "Intelligent" database shared with the press brake, CADMAN-B 3D ensures that a correct part is achieved from the first part.

- Automatically calculates the optimum bend sequence using 3D data
- Model matching of imported 2D unfolded parts based on the bending technology
- Automatically calculates the optimum station set-up and provides a complete graphical set up report for the press brake operator
- Utilizes a true 3D solid model of your press brake and all its options to check interference and collisions between the part, tools and machine

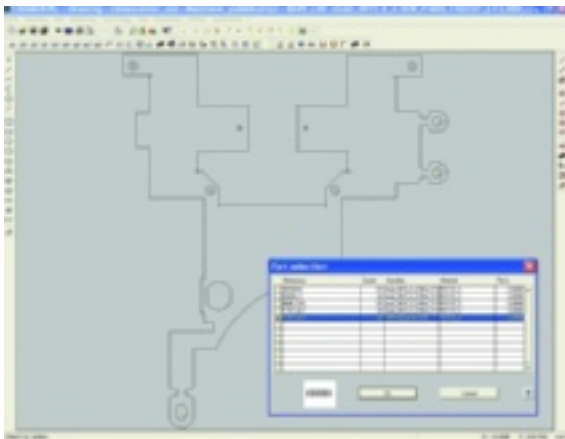
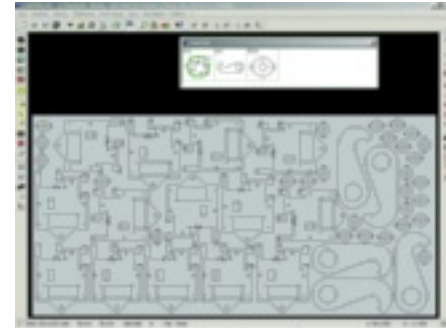
- Generates a complete 3D bending simulation, automatically downloaded to your LVD press brake for easy reference during bending production
- Provides automatic definition of inclined, parallel and multi-bends and simplified definition of hemming bends and preliminary bends
- Complete flexibility to manually or semi-automatically sequence, gauge and bend parts



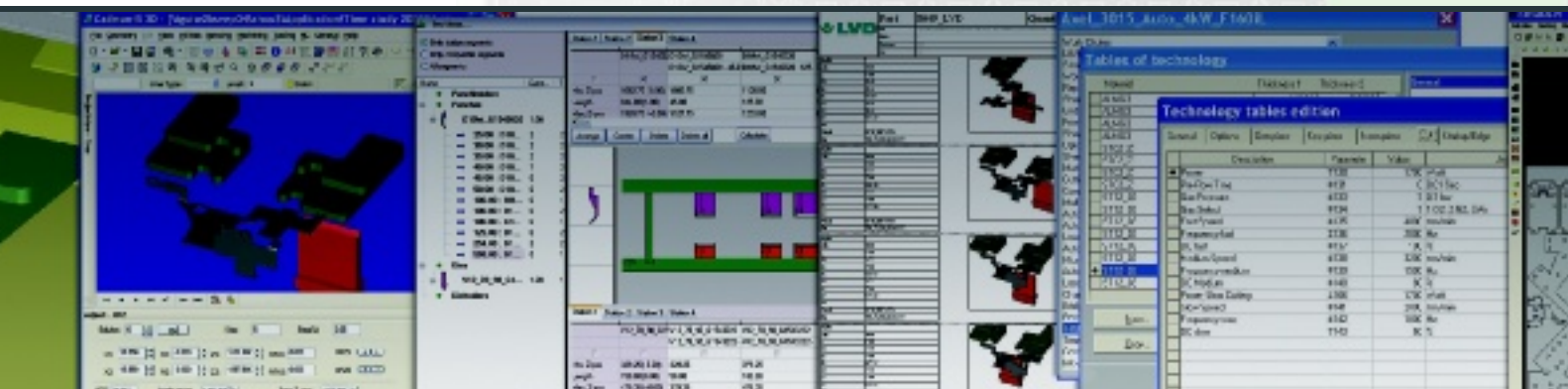
Optimized Laser Cutting

CADMAN-L 3D makes laser cutting easy by providing fully automatic, semi-automatic or manual offline programming including nesting, optimization of cutting and machine parameters. This software module enables users to maximize laser cutting applications by intuitively setting and controlling key functions.

- Flexible lead-in/lead-outs for every kind of contour, bridges, loops and micro-joints, all defined and classified by the cutting requirements, material type and sheet thickness; all laser cutting technology provided by the resident database
- Automatic selection from various types of micro-joints, which can be applied with lead-in/lead-out, to reduce piercing cycles
- Advanced common line cutting with optional pre-cut corners
- Collision avoidance and automatic cutting sequencing
- Skeleton cutting and utilization of sheet remnants



- Computerized program sequence simulation with a visual laser head for program verification
- Complete flexibility to manually or semi-automatically cut and nest laser parts
- Automatic time and cost reporting

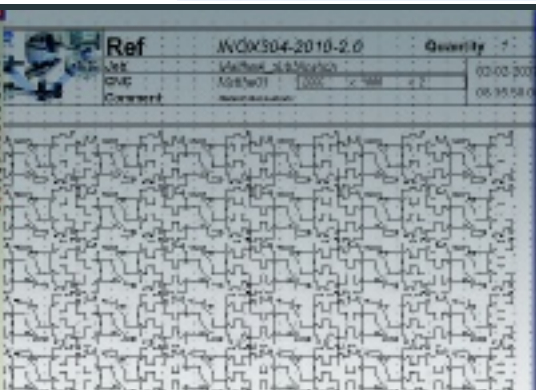
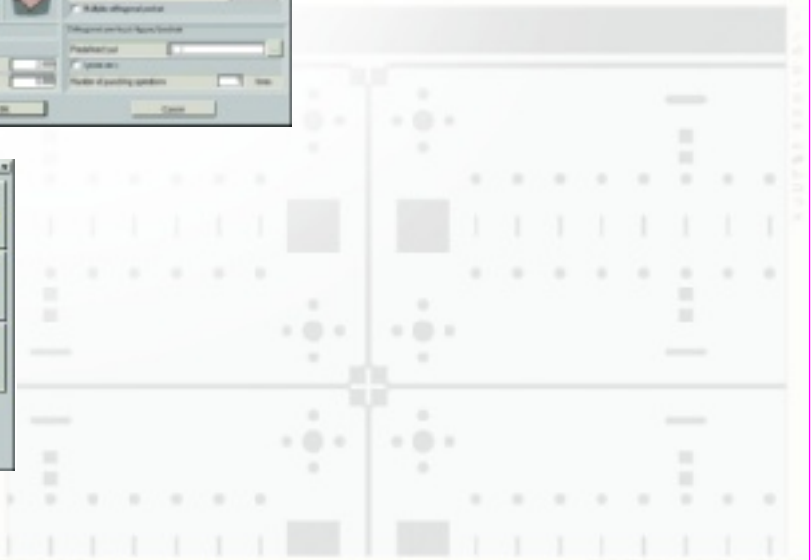
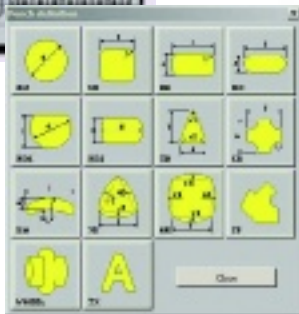
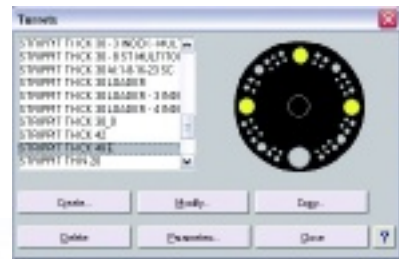
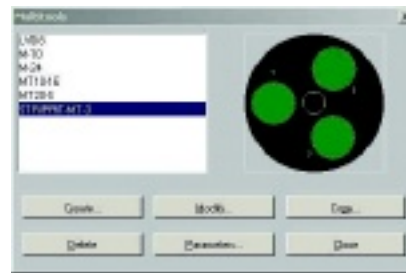


CADMAN-P 3D shortens punch press programming time with automatic tool selection and turret configuration, and identification of optimum tool stations. This module offers full support for all standard and advanced punching functions, including Auto-Index stations, Multi-Tools, standard and special punches, as well as the same powerful automatic nesting features as CADMAN-L 3D.

- Automatic punch selection, assignment and turret loading
- Optimization of tool changes and punch sequencing
- Complete support for complex punching, including auto-index stations, indexable Multi-Tools, standard and special shape punches, forming, embossing, tapping, stamping, rolling and cluster tools

- Powerful database control of punches and dies, Multi-Tools and turrets
- Extensive parametric punch and die library
- Common and non-common line punching
- Automatic sheet repositioning, clamp relocation and progressive moves
- Automatic placement of micro-joints, work chute control, machine cycle stops, part picking by robot, and integrated shear control
- Computerized simulation with visualization of turret and tool changes
- Complete flexibility to manually or semi-automatically punch and manually nest punched parts

Advanced Punching Functions



Excel 1 | 2

Reference: #3137_2305238 Tooltint

Length: 1000.000 Width: 900.000

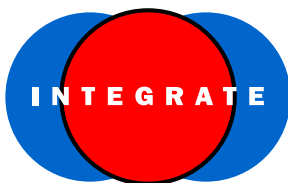
Quantity: 1 CHC MathC2

Cost	Steel	Revised	Group
Cost of material	98.77	98.77	98.77
Cost of machine time	122.65	122.65	122.65
Cost of consumables	1.58	1.58	1.58
Total cost	212.99	212.99	212.99

Reference	Qty	Matu	Time	Sheet	Revised	Group
Webb_LVC_r1	83	83	88.033820	1.94	1.84	1.08
50004_1_2_2	38	4	80.021541	15.30	11.18	90.74
1802400_r2	83	18	88.033820	3.35	3.30	3.02
TOTAL	136	95	171.14920	20.59	23.38	212.99



From Concept to Finished Part



LVD's CADMAN® programming software streamlines the fabricating process by providing one complete integrated CAD/CAM programming system for the design, unfolding, punching, laser cutting and bending of sheet metal parts.

Intuitive, and easy to use, CADMAN provides a seamless integrated offline programming environment enabling users to combine the key fabricating design and programming functions into a single package. Flexibility is increased and "Concept to Finished Part" times are reduced. PC based and Windows compatible, CADMAN also slots straight into your existing network.

CADMAN...

- Intuitive
- Automatic
- Flexible
- Integrated Solution
- Modular

Key Features:

- Import from solid and unfolding
- 2D data handling
- Automatic tooling and sequencing
- Optimization and CNC code generation
- Cost reporting

Windows® is a registered trademark of Microsoft Corp.



A D D R E S S E S

HEADQUARTERS

LVD Company n.v.
Nijverheidslaan 2
B-8560 GULLEGEM
BELGIUM
Tel.: + 32 56 43 05 11
Fax: + 32 56 43 25 00
e-mail: info@lvd.be

Strippit Inc.
12975 Clarence Center Rd.
USA-AKRON NY 14001
UNITED STATES
Tel.: + 1 716 5424511
Fax: + 1 716 5425957
e-mail: info@strippit.com

SUBSIDIARIES *

LVD BeNeLux n.v.
Hondschootestraat 112
B-8560 GULLEGEM
BELGIUM
Tel.: + 32 56 43 08 50
Fax: + 32 56 43 25 20
e-mail: benelux@lvd.be

LVD GmbH
Europastrasse 3/1
D-77933 LAHR
GERMANY
Tel.: + 49 7821 922620
Fax: + 49 7821 9226225
e-mail: info@lvd-gmbh.de

LVD s.a.
ZI du Plouich -
rue du Commerce B.P. 131
F-59590 RAISMES
FRANCE
Tel.: + 33 327 38 01 38
Fax: + 33 327 38 01 36
e-mail: info@lvdsa.fr

LVD Italia s.r.l.
Via Baganzola 29
I-43100 PARMA
ITALY
Tel.: + 39 0521 290188
Fax: + 39 0521 291586
e-mail: info@lvd.it

LVD Limited
Unit 3
Wildmere Road
UK-BANBURY, OXFORDSHIRE
OX16 3JU
UNITED KINGDOM
Tel.: + 44 1295 676 800
Fax: + 44 1295 262 980
e-mail: mailbox@lvduk.com

LVD SWE-NOR A/S
Postboks 78 Ellingsrudåsen
N-1006 OSLO
NORWAY
Tel.: + 47 22 300240
Fax: + 47 22 308517
SWEDEN
Tel.: + 46 300 74 740
Fax: + 46 300 74 754
e-mail: lvd@lvdsn.no

LVD GR E.P.E.
Metamorfoseos Street 20B
GR-38221 VOLOS
GREECE
Tel.: + 30 24210 21295
Fax: + 30 24210 21297
e-mail: lvd@otenet.gr

LVD-Polska Sp. z.o.o.
Ul. Wyspianskiego 45
PL-47-206 KEDZIERZYN-KOZLE
POLAND
Tel.: + 48 77 406 12 73
Fax: + 48 77 483 06 12
e-mail: info@lvd.pl

LVD SIT d.o.o.
Vipavska c. 4 B
SLO-5270 AJDOVSCINA
SLOVENIA
Tel.: +386 53680230
Fax: +386 53680231
e-mail: lvdsit@lvdsit.eu

LVD S2=
Ul. Postova
SQ-982 01 TORNALA
SLOVAKIA
Tel.: + 421 47 5523607
Fax: + 421 47 5522969
e-mail sales: info@newtech.sk

LVD Napomar s.a.
B-dul Muncii Nr. 14
RO-3400 CLUJ NAPOCA
ROMANIA
Tel.: +40 264 415008
Fax: +40 264 415010
e-mail sales: fmoraru@sm-tech.ro

LVD do Brasil Ltda.
Rua Felisberto Petroni 71
Vila Viotto
CEP 13,209-570 JUNDIAI-SP
BRAZIL
Tel.: + 55 11 4522 0323
Fax: + 55 11 4521 1147
e-mail: global.lvd@terra.com.br

LVD India Pvt. Ltd.
S.C.O. 3, 2nd Floor
Sector 15 Market
Faridabad
HARYANA 121007
INDIA
Tel.: +91 98 100 69 454
e-mail: lvdindia@gmail.com

PT. LVD Center
Mangga Dua Plaza
Block N/37
RI-JAKARTA PUSAT 10730
INDONESIA
Tel.: + 62 21 6120771
Fax: + 62 21 6018817
e-mail: lvdindo@bit.net.id

LVD (Malaysia) Sdn. Bhd
14, Jalan Kartunis U1/47
Section U1,
Temasya Industrial Park
MAL-40150 SHAH ALAM
SELANGOR DARUL EHSAN
MALAYSIA
Tel.: + 60 3 556 95 861
Fax: + 60 3 556 95 862
e-mail: lvdm@tm.net.my

LVD Company Ltd.
45 Soi Phattanawet
Sukhumvit soi 71
Prakanong
T-BANGKOK 10110
THAILAND
Tel.: + 66 2 381 1556
Fax: + 66 2 381 1709
e-mail: lvdt@ksc.th.com

LVD-Strippit(Shanghai) Co., Ltd.
Room 601, Silver Tower
933 Zhongshan West Rd
200051 SHANGHAI
CHINA
Tel.: +86 21 51709170
Fax: +86 21 51113532
e-mail : xflvd@hotmail.com